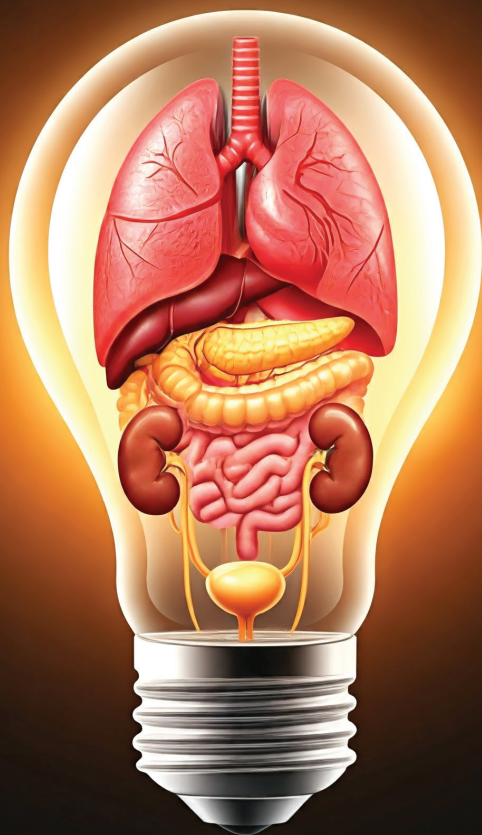


UCLA

David Geffen School of Medicine

5th UCLA Solid Organ Transplant Symposium
Innovations and Updates
An In-Person and Live Virtual Education Conference



Friday, June 6, 2025
Ronald Reagan UCLA Medical Center
Tamkin Auditorium (B-Level)
757 Westwood Plaza
Los Angeles, CA 90095



5th UCLA Solid Organ Transplant Symposium

Innovations and Updates

An In-Person & Live Virtual Education Conference

Course Description

The UCLA Solid Organ Transplant Symposium is an **in-person & virtual** education conference coordinated through UCLA Health Department of Transplant Services, the UCLA Center for Continuing Professional Development and the UCLA Transplant Multi-Disciplinary teams. The goal of this program is to provide a forum for UCLA Transplant multidisciplinary team experts to share updates to current practices and information on recent innovations that enhance transplant and patient outcomes.

Target Audience

The target audience for this symposium is health care professionals who provide care for patients pre- and post-transplant including: Heart, Lung, Liver, Kidney, Pancreas and Intestinal/Multivisceral transplantation. The symposium content is designed for local community physicians, transplant nurses, transplant nurse coordinators, administrators, nurse practitioners, pharmacists, social workers, dietitians and all members of the transplant team to guide and improve their clinical practice and patient management during all phases of transplantation.

Course Objectives:

Following completion of the course, attendees should be able to:

- Identify areas of inequity in solid organ transplantation.
- Discuss factors that contribute to metabolic dysfunction-associated steatohepatitis in liver transplant recipients.
- Define alcohol hepatitis and identify the evaluation and management strategies that may improve patient outcomes as well as resources available.
- Recognize developmental barriers that may impact the transition from adolescent to adult transplant services.
- Identify criteria for bladder transplant candidacy and anticipated benefits over current treatment therapies.
- Identify the significance and clinical application of nephro-genetics in kidney transplantation.
- Appreciate general innovations in perfusion technology and the impact on organ procurement and patient survival.
- Identify risks / benefits / side effects of GLP-1 agonists for treatment of obesity.
- Identify surgical procurement technology now available for heart and lung transplant.
- Identify mechanical circulatory support options for the pediatric pre-heart transplant patient population.

5th UCLA Solid Organ Transplant Symposium

Innovations and Updates

An In-Person & Live Virtual Education Conference

Friday, June 6, 2025

7:00 Registration & Breakfast
 7:50 Welcome & Introduction
 8:00 Key Note Address
 Health Equity and Transplantation
 Mikel Whittier, MD

SESSION I – Liver

Moderators: Jasleen Singh, MD & Katherine Meneses, DNP FNP-BC CCTC

8:45 Managing Metabolic Dysfunction-Associated Steatohepatitis (MASH) in Liver Transplant Recipients
 Sammy Saab, MD, MPH, AGAF, FAGG, FAASLD, Sherona Bau, MSN, ACNP-BC, CNS-BCP & Mopelola Adetola Adeyemo, MD, PhD - (Dietitian /Nutritionist)

9:15 Improving Outcomes in Liver Transplant Candidates and Recipients with Alcohol-Related Liver Disease
 Akshay Shetty, MD

9:45 Easing the Adolescent to Adult Transition in Liver Transplant Recipients
 Robert Venick, MD

10:15 Break

SESSION II – Kidney

Moderators: Patricia L. Weng, MD & H. Albin Gritsch, MD

10:30 Delayed Immunological Tolerance after Kidney Transplantation
 Jeffrey L. Veale, MD

10:50 Bladder Transplant
 Nima Nassiri, MD

11:20 Genetics and Kidney Health
 Anjay Rastogi, MD, PhD

11:40 Patient Experience
 Louis Mejia- kidney transplant recipient

11:50 Question & Answer Session

12:00 Lunch Break

SESSION III – Thoracic

Moderators: Juan Alejos, MD & Heather Barone, RN, MSN, CCTC

1:00 Bridging Patients to Transplant
 Ali Nsair, MD

1:20 Composite Allocation Score
 David M. Sayah, MD, PhD

1:40 Novel Approaches to Pediatric MCS
 Ming Si, MD

2:00 Reproductive Considerations for Transplant Recipients
 Megan Kamath, MD

2:20 Question & Answer Session

2:30 Break

SESSION IV – Innovations

Perfusion Technology
 Moderator: Douglas G. Farmer, MD, FACS

2:45 Heart/Lung: Surgical Procurement Technology Innovations
 Abbas Ardehali, MD, FACS

3:05 Liver: OCS
 Samer Ebaid, MD

3:25 Surgical Innovations – Perfusion Technology Panel Discussion

Obesity Management of Transplant Candidates and Recipients
 Moderator: Jill Strejc, MSN, RN, MS, RD, CCTC

3:40 Nutrition- and Weight-Related Concerns in the Solid-Organ Transplant Patient Population
 Dana Ellis Hunnes, PhD, MPH, RD

4:00 Pharmacokinetics of Glucagon-Like Peptide-1 (GLP-1) Agonists
 Ted Sievers, PharmD

4:20 Pharmacologic Options for Managing Obesity in the Solid Organ Transplant Population
 Michael Garcia, MD

4:40 Obesity/GLP-1 – Panel Discussion

4:45 Final Questions & Closing Remarks

5:00 Adjourn – All attendees are welcome to attend our networking reception!



FACULTY

COURSE CHAIRS

Juan C. Alejos, MD

Abbas Ardehali, MD, FACS

Douglas G Farmer, MD, FASC, CTS

Hans A. Gritsch, MD, FASC

Erik Lum, MD, FASN, FNKF

Ali Nsair, MD

Anjay Rastogi, MD, PhD

Sammy Saab, MD, MPH, AGAF, FAASLD, FACP

David Sayah, MD, PhD

TRANSPLANT ADMINISTRATION

Laura Yost, MSHA

Emily Stimpson, RN, MSN, CCTC

Nick Feduska, Jr., MSHA

TRANSPLANT NURSE MANAGERS

Heather Barone, RN, MSN, CCTC (Call team)

Melissa Dunbar Forrest, RN, BSN, CPTC (Kidney)

Stephanie Fraschilla, RN, MSN, CCTC (Quality and Compliance)

Melissa Moore, RN, MPH, CCTC (Heart/Lung)

TRANSPLANT NURSE COORDINATORS PLANNING COMMITTEE

Natalie Bjelajac, FNP (Kidney)

Kelly Dempster, RN, MSN, CCTC (Liver)

Vilayphone Hwang, RN, MSN, NP, CCTC (Kidney)

Aaron Kaye, RN, BSN, CCRN, CCTC (Heart/Lung)

Christine Lee, RN, BSN, CCTC (Kidney)

Johanna Lyudmirsky, RN, BSN, CCTC (Liver)

Michelle Rivera, RN, MSN, CCTC (Kidney)

Jill Strejc, RN, MSN, MS, RD, CCTC (Kidney)

COURSE FACULTY

Mopelola Adetola Adeyemo, MD, PhD

Assistant Professor

Division of Clinical Nutrition

Juan C. Alejos, MD

Clinical Professor of Medicine*

Medical Director of the Pediatric Heart

Transplant/Cardiomyopathy Program

Director of the Pediatric Pulmonary

Hypertension Program

President and Founder of Hearts with Hope Foundation

Abbas Ardehali, MD, FACS

Professor of Surgery and Medicine*

Division of Cardiothoracic Surgery William

E. Connor Endowed Chair in Cardiothoracic Transplantation Director, UCLA Heart, Lung, and Heart-Lung Transplant Programs

Sherona Bau, MSN, ACNP-BC, CNS-BC

Hepatology Nurse Practitioner

UCLA Pfleger Liver Institute

Samer Ebaid, MD, PhD, MS

Assistant Professor of Surgery*

Douglas G. Farmer, MD, FACS, CTS

Professor of Surgery

Surgical Director of Intestinal Transplant Program

Surgical Director, Pediatric Liver Transplantation

Chief, Division of Liver and Pancreas Transplantation

Michael C. Garcia, MD

Associate Professor of Medicine*

UCLA Center for Human Nutrition

H. Albin Gritsch, MD

Health Sciences Clinical Professor of Urology*

John Jergens Chair, Kidney Transplantation

Surgical Director, Kidney Transplantation Department of Urology

Dana Ellis Hunnes, PhD, MPH, RD

Registered Dietitian

Ronald Reagan UCLA Medical Center

David Geffen School of Medicine at UCLA*

FACULTY

COURSE FACULTY (continued)

Megan Kamath, MD

Assistant Clinical Professor of Medicine*
Ahmanson-UCLA Cardiomyopathy Center
Mechanical Circulatory Support and Heart
Transplantation Program

Erik L Lum, MD, FASN, FNKF

Associate Professor of Medicine*
Medical Director, HLA Incompatible Kidney
Transplant Program. UCLA Kidney and Pancreas
Transplant Program
Medical Director, Kidney Transplant Tolerance
Program. UCLA Kidney and Pancreas Transplant
Program
Medical Director, Bladder Transplant Program

Katherine Meneses, DNP FNP-BC CCTC

Transplant Coordinator III

Nima Nassiri, MD

Assistant Professor of Medicine and Surgery*
Surgical Director/ PI, Bladder Transplant
Program
Department of Urology
Kidney Transplant Program

Ali Nsair, MD

Medical Director, Heart Transplantation
and Mechanical Circulatory Support Device
Services*
Heart Failure – Interventional Cardiology
Broad Stem Cell Research Center

Anjay Rastogi, MD, PhD

Director | Nephro-Genetics Program
Founder and Director | CORE Kidney Program
Professor and Clinical Chief
Division of Nephrology | Department of Medicine
UCLA Health | DGSOM

Sammy Saab, MD, MPH, AGAF, FACC, FAASLD

Professor of Medicine and Surgery*
Medical Director, Pflieger Liver Institute
Medical Director, Adult Liver Transplant Program
Chief, Transplant Hepatology
Head, Outcomes Research in Hepatology
Adjunct Professor of Nursing

David M. Sayah, MD, PhD

Associate Clinical Professor of Medicine*
Medical Director, Lung and Heart-Lung
Transplant Programs Division of Pulmonary &
Critical Care Medicine

Akshay Shetty, MD

Assistant Professor of Medicine and Surgery*

Ming Si, MD

Associate Professor, Department of Surgery*

Ted Sievers, PharmD

Clinical Transplant Pharmacist
Director, PGY2 Solid Organ Transplant Pharmacy
Residency Program
Ronald Reagan UCLA Medical Center

Jasleen Singh, MD

Assistant Clinical Professor of Medicine and
Surgery*

Jill Strejc, MSN, RN, MS, RD, CCTC

Clinical Transplant Coordinator
Kidney Transplant Program

Jeffrey L. Veale, MD

Professor of Medicine and Surgery*
Department of Urology
Director, Kidney Exchange Program
Program Director, Transplant Fellowship
PI: Immune Tolerance Program
Kidney Transplant Program

Robert S. Venick, MD

Professor of Pediatrics and Surgery*

Patricia L. Weng, MD

Assistant Clinical Professor of Pediatrics -
Nephrology*
Medical Director, Pediatric Kidney Transplant
Program

David Geffen School of Medicine at UCLA*

KEYNOTE SPEAKER

Mikel Whittier, MHA

UCLA Health Director, Health Equity, Diversity and Inclusion

5th UCLA Solid Organ Transplant Symposium

Innovations and Updates

An In-Person & Live Virtual Education Conference

FRIDAY, JUNE 6, 2025

In-Person & Live Virtual Conference Fee:

Registration: \$75

Students: \$30

Location

Ronald Reagan UCLA Medical Center

Tamkin Auditorium (B-Level)

757 Westwood Plaza

Los Angeles, CA 90095

Parking and Directions

From the 405 freeway, exit Wilshire Blvd., East toward Westwood. Turn left on Westwood Blvd., travel past Charles E. Young Dr. South and turn left on "Structure 8 driveway". Visitor parking is available in Lot 8 at a rate of \$16 for the day. Please use the pay-by-plate stations to purchase your parking permit. The Ronald Reagan UCLA Medical Center is located on the corner of Westwood Plaza and Charles E. Young Dr. South.

The 5th UCLA Solid Organ Transplant Symposium will also be available through a live virtual meeting web platform.

- Attendees who choose to attend the virtual activity will receive a virtual meeting link and password to access the live virtual conference.
- All registrants (live or virtual) will be provided the opportunity to review recorded sessions up to 3 weeks following the conference.
- The recorded sessions are not approved for Continuing Education (CE) credit.

Refunds

Cancellations must be received by May 16, 2025 and will be subject to a \$25 processing fee. No refunds will be granted after that date. David Geffen School of Medicine at UCLA reserves the right to cancel or postpone this course if necessary; in the event of cancellation, course fees will be fully refunded. We are not responsible for other costs, such as non-refundable airline tickets or hotel penalties.

In-Person attendees will be provided breakfast, lunch and refreshments at the conference. All are welcome to attend our reception held following the conference.

Enrollment

Online: Click the link to register <https://ucla.cloud-cme.com/SolidOrgan25>

We accept Visa, MasterCard, American Express, Discover credit cards, and ACH/electronic transfer.

Any questions, please email the UCLA CCPD Office at ccpd@mednet.ucla.edu, or call 310-794-2620

Early registration is recommended, as space is limited.

5th UCLA Solid Organ Transplant Symposium Innovations and Updates

C13902

Friday, June 6, 2025

In-Person & Virtual Registration Fee

Registration: \$75

Students: \$30



In-Person Only

Transplant Networking Event (In-Person Only): \$0

Please join us at the conclusion of the symposium for our transplant networking event. Capacity is limited.

We accept Visa, MasterCard, American Express, and Discover credit cards.

To register using a credit card or ACH/electronic transfer, please visit <https://ucla.cloud-cme.com/SolidOrgan25>

**Credit card and check payments via phone, fax, or mail are no longer accepted.*

Questions

If you have questions about enrollment, please call (310) 794-2620 or email: ccpd@mednet.ucla.edu.

Accreditation Statement

The David Geffen School of Medicine at UCLA is accredited by the Accreditation Council for Continuing Medical Education to provide continuing medical education for physicians.

The David Geffen School of Medicine at UCLA, designates this live activity for a maximum of 7.75 AMA PRA Category 1 Credits™. Physicians should claim only the credit commensurate with the extent of their participation in the activity.

The California State Board of Registered Nursing accepts courses approved by the AMA PRA Category 1 Credits™ as meeting the continuing education requirements for license renewal. Nurses from states other than California should inquire with their local State Board for specific continuing education policies.

The American Board for Transplant Certification (ABTC) has approved this educational offering for up to 7.75 Category One Continuing Education Points for Transplant Certification (CEPTCs).

Disclosure Statement

The FDA has issued a concept paper that classifies commercial support of scientific and educational programs as promotional unless it can be affirmed that the program is truly independent and free of commercial influence. In addition to independence, the FDA requires that non-promotional, commercially supported education be objective, balanced and scientifically rigorous. The policy further states that all potential conflicts of interest of the CME staff and faculty be fully disclosed to the program's participants. In addition, Accreditation Council for Continuing Medical Education policy mandates that the provider adequately manage all identified potential conflicts of interest prior to the program. UCLA fully endorses the letter and spirit of these concepts.